



## ***HAN – Hidden Automatic Navigator***

***Access&Management of eJournals and e-resources  
- Security, Efficiency, Transparency -***

***Dipl.-Ing. Christian Günther  
(Productmanager & International Sales)***

- 1) no/limited/troublesome access from outside the campus  
**HAN: worldwide access from anywhere**
- 2) public distribution of account data  
**HAN: all account data remain hidden from users**
- 3) remember individual passwords per journal / set of eJournals  
**HAN: „Single Sign-On“, access via standard network logon**
- 4) licenses are bought campuswide (for users AND non-users)  
**HAN: access management, buy licenses according demand**
- 5) statistics are not standardised between publishers  
**HAN: standardised, detailed, uniform data across all publishers**
- 6) no chance to monitor usage versus costs, aggregated data only  
**HAN: who, which e-Journals, how long, how much, how often**
- 7) manual management of subscription/licenses/message boxes  
**HAN: integrated scheduler / inventory / license control**



## HAN: The central solution for eJournals and internet resources

- 
- |                       |   |
|-----------------------|---|
| ▶ identify the user   | ▶ 1-Click-navigation to destination                                   |
| ▶ check access rights | ▶ protocol usage if desired   |
| ▶ check licences      | ▶ provide enhanced management<br>(subscription/inventory/maintenance) |
-



## HAN - fully automatic access to internet resources

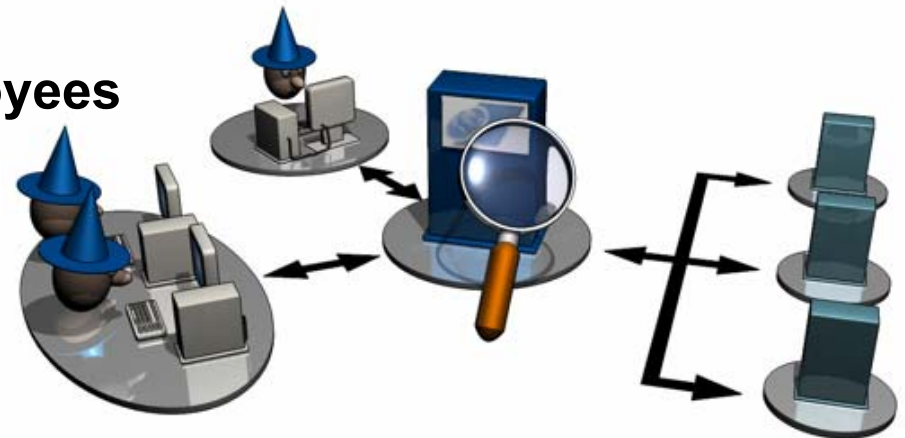


➤ 1) **HAN in the face of publishers:**

the only „member“ of your campus

➤ 2) **HAN in the face of students/employees**

the „mega“ publisher for all eJournals



➤ 3) **HAN in the face of the system administrator**

integrated help for many tasks around management of eJournals and internet resources



## HAN - fully automatic access to internet resources

### Account data remain secret!



#### ➤ HAN manages account data

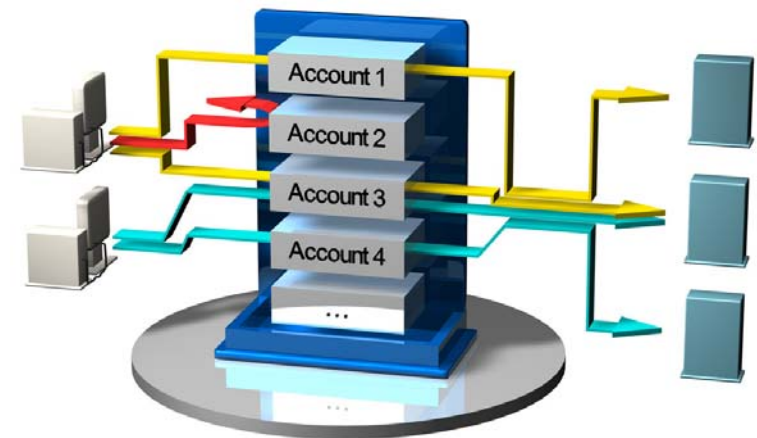
URLs, usernames, passwords are hidden

#### ➤ HAN uses its own authorisation

only one IP-adress is used for access to all publishers and e-Journals

#### ➤ All accesses are done via HAN

retrieves login information from your network/library system.  
If authorisation was okay, HAN leads user automatically to the destination page





## HAN - fully automatic access to internet resources

### HAN – Administration

#### ➤ HAN allows for navigation sequences

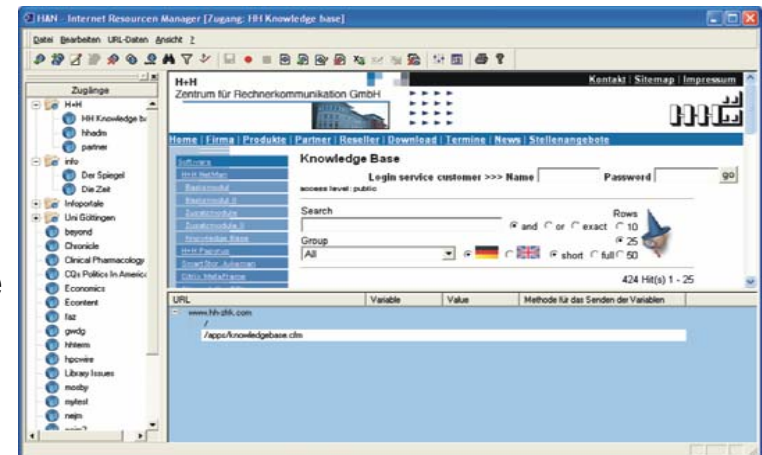
HAN may record the way from the entry page to the destination page, internet macro recording

#### ➤ HAN manages groups of journals

Modify characteristics of various e-journals in one step (e.g. all journals of a certain publisher)

#### ➤ HAN manages subscription / inventory

Subscription periods are controlled and maintained, users are automatically informed, inventory and sorting via individual criteria, individual message boxes instead of cryptic publisher one's.





## HAN - fully automatic access to internet resources

## HAN - uniform, standardised statistics



### ➤ ICOLC-compatible

HAN follows recommendations given by international library consortium ICOLC

### ➤ Statistical evaluation...

according to journals, time, data, how often Journals have been used, who used which Journal etc.

### ➤ Distribution of costs if desired

Exact billing according to usage

	Protokoll-ID	Protokolldatu	Aufrufe	Nutzung in Sekunden	Übertragene Bytes
6	Zeitschrite	January 2002	10	352	662944
5	Wetter	January 2002	12	617	1191085
4	Infoportale	January 2002	8	374	1029522
3	HH	January 2002	9	107	293136
2	Essen	January 2002	2	7	35179
1	EJournals	January 2002	6	175	302719

NetMan - Protokollansicht - [Summierte HAN-Protokolldatei]  
Datei Bearbeiten Ansicht ?  
HAN-Rohe Daten HAN-Sequentiell **HAN-Summiert**  
Drücken Sie F1, um Hilfe zu erhalten  
Datensätze: 0000000006



# EJL Regensburg + HAN

## - the perfect symbiosis-



### **EJL Regensburg**

---

- central maintenance of links plus user individual portal for access into eJournals
- central place for buying licenses and building license consortia

### **HAN**

---

- transparent access, hidden account data, license control
- fine tuning of access rights, bill costs according to usage
- uniform, standardised statistics
- „1 Click Navigation“ to destination page
- access from anywhere in the world, not only from inside the campus

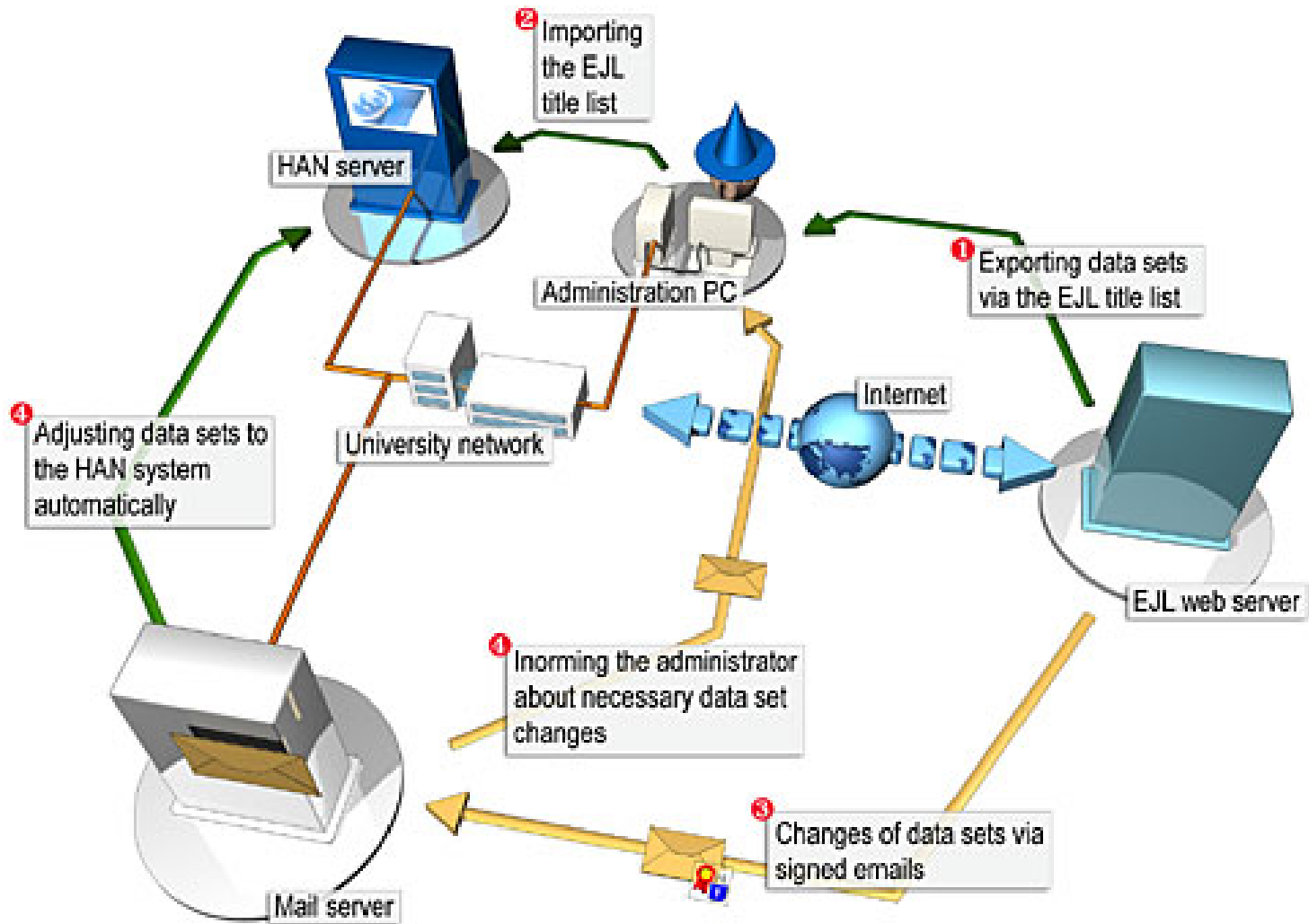
### **EJL Regensburg + HAN**

---

- interface for fully automatic integration of data into HAN



# EJL Regensburg + HAN



# HAN: Key Benefits



## HAN - fully automatic access to internet resources

- access from anywhere in the world (**=> *Increased user Convenience***)
- account data remain hidden from users (**=> *Increased Security***)
- „Single Sign-on“ (**=> *Security / increased user Convenience***)
- 1 Click Navigation to destination page (**=> *Increased user Convenience***)
- automatic subscription control / inventory (***Reduced maintenance effort***)
- uniform, standardised statistics (**=> *Reduced maintenance effort***)
- detailed statistics (**=> *Control costs versus usage***)



## HAN - fully automatic access to internet resources

---



**Těšíme se na váš  
zájem!**



---

**More info and live demonstration can be asked for at  
AiP stand, here at INFORUM 2005**