

# Document delivery as collection development

Presentation. INFORUM. Praha,  
May 26th 2015

# Outline of lecture

1. PDA at the University of Bergen Library
2. Comparing e-book use with printed book circulation
3. Conclusions
  1. Quantity: Document delivery
  2. Quality: Collection development

# What is PDA?

- E-book document delivery system
- «Just in case, just in time»
- Library defined e-book collection accessed through library catalogue.
- Patrons use, library pays.

# PDA at the UBL

- Main indicators University of Bergen 2015
  - 14 7900 students
  - 2 137 staff
    - Of which 605 ph.d. students
- Activity stable over time

# E-book use vs print use.

- How much is much ?
- E-book use numbers combine browsing and borrowing
- The methodological problem

# PDA numbers.

**Table 1. Ebrary PDA activity at UBL, Jan. 24<sup>th</sup> 2012 to Dec 31<sup>st</sup> 2015.**

Year	Month	Titles acquired				Cost (YS)/title			
		PDA	STL	PDA-4 use	Library purchase	PDA	STL	PDA-4 use	Library purchase
2012	All	207	590	91	86	85	14	95	161
2013	All	159	1213	57	165	75	16	103	126
2014	Jan	23	102	6	44	100	16	103	120
	Feb	30	192	9	18	86	16	106	102
	Mar	46	396	8	28	89	17	105	116
	Apr	75	574	24	10	92	18	115	131
	May	65	594	18	21	74	19	125	155
	Jun	41	364	23	7	87	19	119	123
	Jul	39	304	17	22	82	23	137	167
	Aug	40	344	16	10	83	36	111	133
	Sep	42	476	23	16	91	37	150	151
	Oct	96	723	45	19	91	37	116	127
	Nov	70	671	50	13	81	36	141	103
	Dec	58	442	41	6	90	31	130	182
<b>2014</b>		<b>625</b>	<b>5182</b>	<b>280</b>	<b>214</b>	<b>87</b>	<b>29</b>	<b>122</b>	<b>132</b>

Source: Ebrary Orders and PDA trigger reports.

Notes:	Jan	Max PDA price increased to USD 200,-.
	Mar	PDA catalogue accessible in OPAC and discovery tool
	Jul	STL price raises from major publishers.

# The problem of librarian-driven collection development.

Table 2. UBL: Aggregate circulation 2008-2012 for 2008 acquisitions cataloged in 2008 and 2009. Titles. By UBL lending library.

Library	Titles acquired	Titles lent	All patrons (%)	Institutional patrons (%)
Humanities	3049	2095	68,7	58,8
Law	458	315	68,7	59,2
Medicine et al..	554	438	79,1	75,6
Psychology et al.	669	554	82,8	70,7
Science	902	629	69,7	60,3
Social science et al.	1617	1351	83,5	81
UBL	7249	5382	74,2	66,3

# Patron use at the 4 «Ebrary-compatible» libraries of the UBL

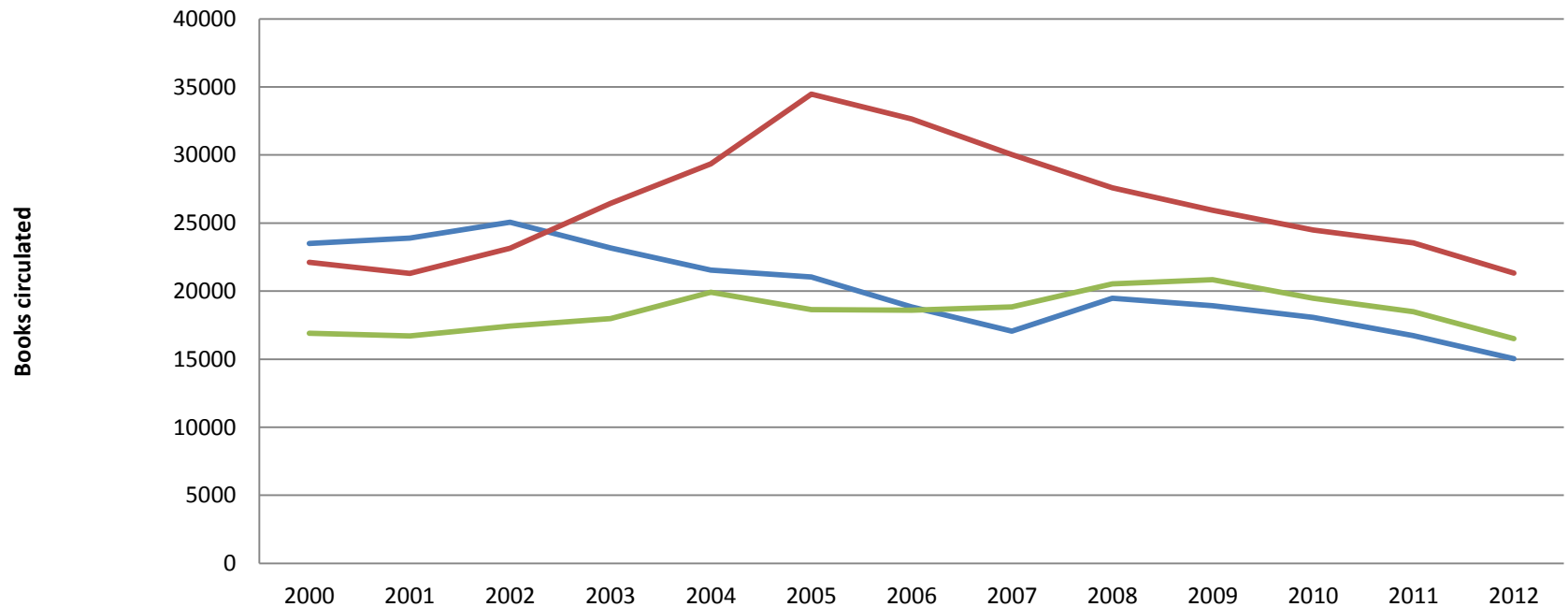
**Tab. 4. Lending by institutional user categories 2008-2012. 2008 acquisitions. Documents**

Library	Aquisitions	Circulation		User category		
		Never	loans > 3	Undergrad.	Graduate students	Faculty
<b>Humanities</b>	1696	558	260	494	559	689
<b>Psychology</b>	565	164	136	114	279	205
<b>Science</b>	643	228	120	136	273	243
<b>Social sciences</b>	1274	244	409	573	700	932
<b>All</b>	4178	1194	925	1317	1811	2069



# Circulation in the long run.

**UBL Circulation. Annual. 2000-2012. By user category**



	2000	2001	2002	2003	2004	2005	2006	2007	2008	2009	2010	2011	2012
Undergraduates	23495	23900	25057	23166	21552	21046	18836	17065	19487	18927	18077	16724	15042
Graduate students	22118	21294	23140	26458	29358	34466	32659	30042	27593	25931	24497	23552	21335
Faculty	16896	16705	17428	17986	19925	18644	18604	18849	20530	20845	19486	18477	16512

# Ebook use

**Tab. 8: Ebray 2009-2014. Aggregate annual “circulation”.**

Year	Pages views	Pages copied	Pages printed	Unique titles	User sessions	Chapter/Range downloads	Title downloads
2009	196601	2276	37144	6735	11660		
2010	187902	3173	48406	6479	11707		
2011	241317	3462	32896	6801	14298	249	92
2012	366250	3993	35389	11700	23004	3215	389
2013	382059	2988	30507	12262	25037	5232	509
2014	713187	6284	151423	25614	48330	7573	1101
	2087316	22176	335765	69591	134036	16269	2091

# Just in time

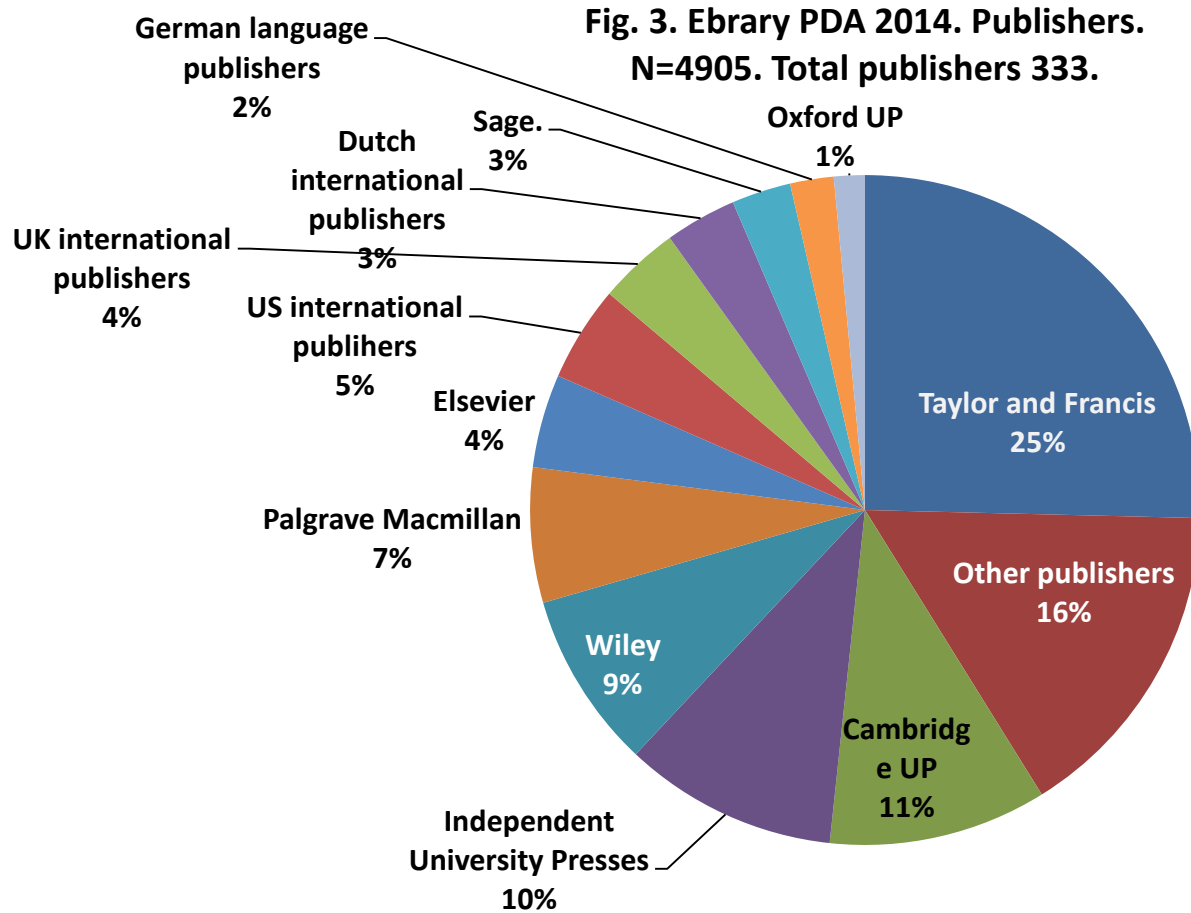
---

**Tab. 9. UBL. 2014. Ebrary. PDA as a proportion of total use**

	<b>Titles</b>	<b>User sessions</b>	<b>Total Pages V/C/P use</b>	<b>Downloads</b>
<b>Ebrary</b>	<b>16697</b>	<b>48330</b>	<b>870894</b>	<b>8674</b>
<b>PDA</b>	<b>4927</b>	<b>33413</b>	<b>775317</b>	<b>7360</b>
<b>PDA %</b>	<b>29,5</b>	<b>69,13</b>	<b>89,03</b>	<b>84,85</b>

---

# Quality: Publishers



# Quality: Content

**Fig. 3. 2014. Ebrary PDA usage by subject.**  
(Locally adapted BISAC categories) N=4730

